

39,561 SF Industrial Buildings on 3.64 Acres

2000 BLOCK HARBOR DRIVE | SAN DIEGO, CA 92113



THE PROPERTY

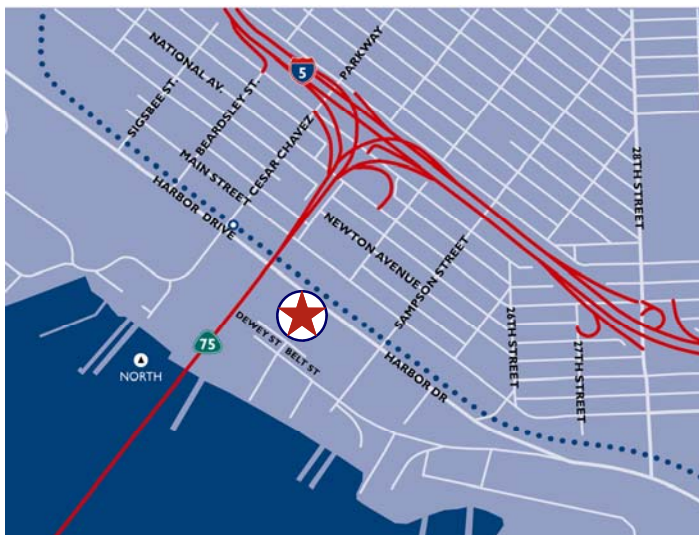
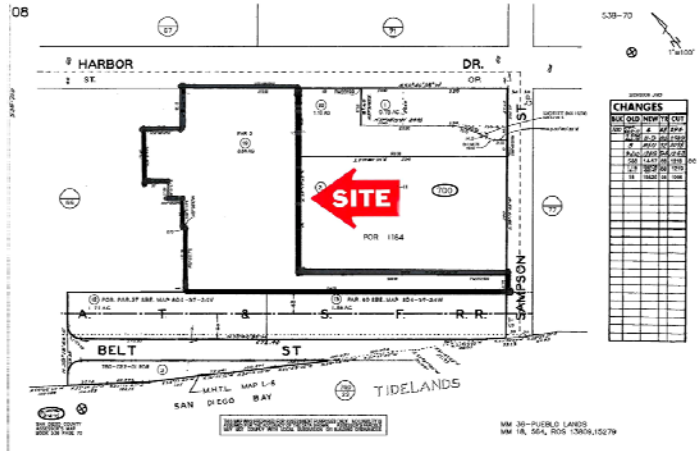
- > An approximately 24,262 square foot freestanding industrial building and an approximately 15,299 square foot freestanding industrial building.
- > 3.64 acre parcel with access to Harbor Drive and Sampson Street.

ZONING

- > Barrio Logan Planned District "D" allows heavy industrial uses. The property is within the California Coastal Zone.

PROXIMITY

- > .75 mile to Tenth Avenue Marine Terminal
- > 1 mile to San Diego Convention Center
- > 1 mile to National Steel and Shipbuilding Company (NASSCO)
- > 1.5 miles to home port of the US Navy Pacific Fleet
- > 1.3 miles to PETCO Park, *Home of the San Diego Padres*
- > 4.2 miles to San Diego International Airport



ECONOMIC INCENTIVES

- > State Enterprise Zone
- > SBA HUB Zone

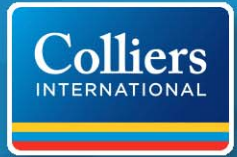
ACCESS

- > Excellent access to Interstate 5, interstate 15, and State Route 94.

PRICE

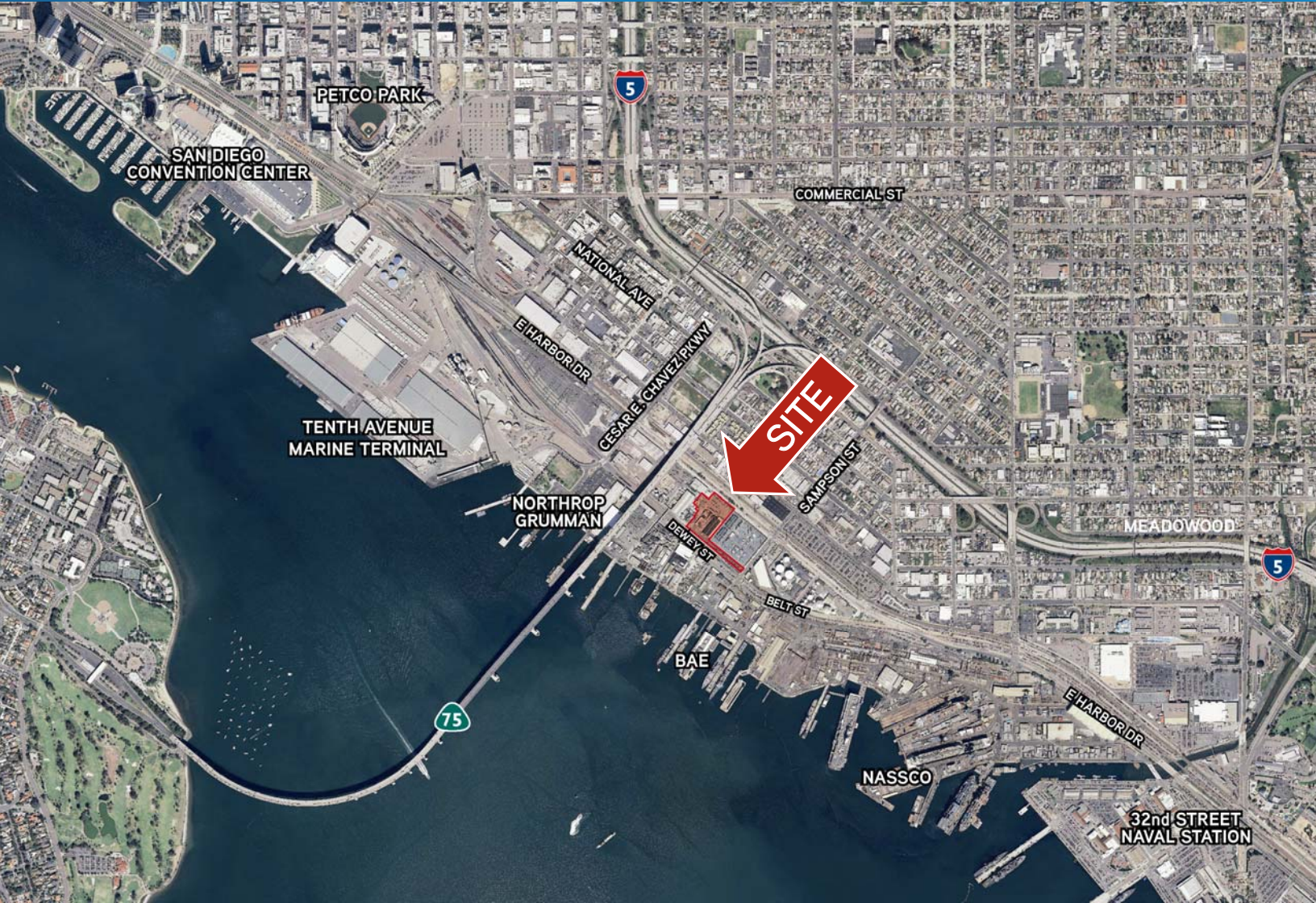
- > \$10,350,000

FOR SALE > BARRIO LOGAN



39,561 SF Industrial Buildings on 3.64 Acres

2000 BLOCK HARBOR DRIVE | SAN DIEGO, CA 92113



Contact Us

LINDA GREENBERG

858 677 5343

linda.greenberg@colliers.com

Lic. No. 00845808

COLLIERS INTERNATIONAL

4660 La Jolla Village Drive, Suite 100

San Diego, CA 92122

www.colliers.com/sandiego

This document has been prepared by Colliers International for advertising and general information only. Colliers International makes no guarantees, representations or warranties of any kind, expressed or implied, regarding the information including, but not limited to, warranties of content, accuracy and reliability. Any interested party should undertake their own inquiries as to the accuracy of the information. Colliers International excludes unequivocally all inferred or implied terms, conditions and warranties arising out of this document and excludes all liability for loss and damages arising there from. Colliers International is a worldwide affiliation of independently owned and operated companies.

